



Welcome everyone to the Annual Meeting of the Members of Riverside Nature Center.

I am Bryan Brown, the current President of the RNC. I would like to introduce our board members and officers.

We have a quorum of our members so I am calling this meeting to order.

We would like to conduct the business portion of the meeting first, and then have a presentation about what is happening at the RNC.

Annual Membership Meeting  
Minutes  
January 23, 2025

Please take a moment to review  
the minutes

The first order of business is the approval of the minutes of the last annual meeting of members held on January 23, 2025. Copies have been made available to everyone here. Does anyone have any additions or corrections to the minutes? Is there a motion to approve the minutes as written? Is there a second?

All in favor, please say aye; opposed, please say no. The minutes are approved as written.

The next bit of business is the election of officers, directors and the Nominating Committee.

Let me ask Tara Bushnoe, Chair of the Nominating Committee to come forward to present its report.

## 2026 Officers & Directors Election

**Officers:** Serve one year terms with a limit of 3 terms.

- ☐ President: Bryan Brown – 3rd term
- ☐ Vice President: Leslie Jones – 3rd term
- ☐ Past President: Tara Bushnoe – 3rd term
- ☐ Secretary: Brad Toelle – 3rd term
- ☐ Treasurer: Jeff Gelsone – 9th term \*

**\* SECTION 3. Terms of Office** All officers shall be elected at the January meeting and shall hold office for one (1) year, beginning with the January meeting or until their successors take office. No Officer shall be elected for more than three (3) consecutive terms in the same office, with the exception of the Treasurer, who, if elected, may hold office for additional consecutive terms.

**Directors:**

- ☐ Jennifer Dean (1<sup>st</sup> year 1<sup>st</sup> Two Year Term)
- ☐ Jill Drake (1<sup>st</sup> year 1<sup>st</sup> Two Year Term)
- ☐ Rebecca Keim (1<sup>st</sup> year 1<sup>st</sup> Two Year Term)
- ☐ Jen Wittler (1<sup>st</sup> year 1<sup>st</sup> Two Year Term)
- ☐ Johnny Arredondo (1<sup>st</sup> year 2<sup>nd</sup> Term)
- ☐ Kathryn Dover (1<sup>st</sup> year 2<sup>nd</sup> Term)
- ☐ Mary Bourne-Marth (1<sup>st</sup> year 2<sup>nd</sup> Term)

## Nominating Committee Election

General members of the Nominating Committee serve a 2 year term. The Chair is approved by the current Board of Directors.

- ☐ Mary Bourne-Marth, Chair
- ☐ Chris Distel

This Nominating committee is comprised of a Committee Chair, who is a member of the Board of Directors and is approved by the board of directors and 2 members from the general membership. These members are elected on alternating years. I (Tara Bushnoe) served as Chair for the past 2 years. The Board of Directors have appointed Mary Bourne-Marth as the new committee chair for 2026. Jean Nunnally will be serving her 2<sup>nd</sup> year. It is necessary to elect a member to replace Barbara Oates, who has served her 2-year term. Thank you, Barbara.

Are there any nominations from the floor?

Is there a motion to close the nominations? Is there a second?

All in favor, please say aye; opposed, please say no. The nominations are closed.

All in favor of the slate of candidates, please say aye; opposed, please say no. The slate of candidates for officer, director, and Nominating Committee has been elected.



I would like to take this time to say thank you to our Board of Directors... (maybe introduce those present)

We are excited to have 4 new directors joining us; however, we must say good bye to 3 who have each served 4 years, fulfilling their total eligible commitment.

Kevin Wessels

Rachael Carruthers

Chris Distel

I will turn it over to Becky Etzler, our Executive Director who will review with you some of the past year's highlights.



Those of you who have attended this annual members' meeting over the past few years, know that I attempt to tie that year's exhibit theme to this presentation. This year is an exception and for many reasons. The main one being we have not truly had an exhibit this past year. "Our Place in Space" was to be followed by "Nature's Secret Services", an exhibit illustrating the often overlooked yet vital services nature provides us. We redesigned the kid's corner and you cannot miss the big beautiful tree in the middle of the atrium. Further installation was delayed and then the July 4<sup>th</sup> flood happened. Needless to say, the exhibit unfortunately has taken a back seat to other priorities. But...stay tuned, the new exhibit is on the horizon.

So, what's the theme of this year's presentation, you ask?

tran·si·tion

/tran'ziSHən/

noun

the process or a period of changing from  
one state or condition to another.

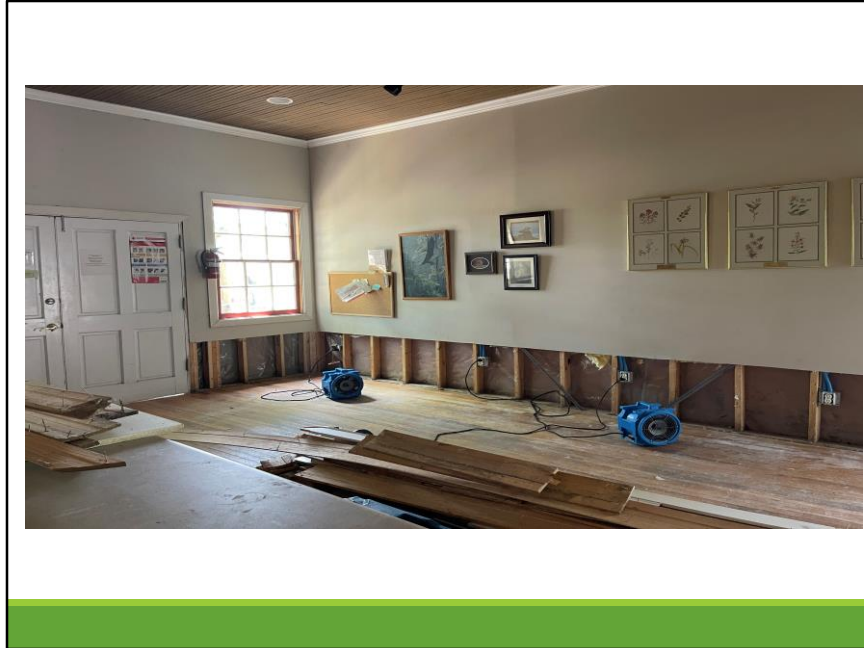
Transition. The oxford dictionary defines transition as “the process or a period of changing from one state or condition to another.” It signifies movement, adaptation, and the period during which a new form emerges from an old one, like a caterpillar becoming a butterfly. It's a period of change, not just the end result. I believe we are all in a period of transition.



The catalyst being the flood.

How has Riverside Nature Center navigated this process of transition? Let's take a look:

We set a clear objective of getting our campus and visitor center operational as quickly as possible. We have been a community resource and hub up to this point and it was necessary to get back to that status quickly.



We accomplished this by way of the physical and financial support of our community. Volunteers helped us muck out, clean, sort, store, replant, remove debris, test equipment, rebuild equipment, tear down walls, rebuild walls, paint, whatever needed to be done, it was handled. And we were able to reopen our doors in just 8 weeks.

Not only open our doors but offer a full schedule of programs and workshops, and meeting space for our partner organizations.



Shortly thereafter, the nature lab was back in operation with a new and improved appearance and function. Again, accomplished through the hard work and generosity of volunteers.



The Lawson Store, which had its outside repainted earlier in the year, again thanks to a wonderful group of volunteers, needed interior repair. New flooring, wallboard repair, and paint. We took the opportunity to give it a fresh new look with a few upgrades. Again, rather than simply repair and replace, this was the time to transition into something better. This time, we hired contractors to do the work. This was possible through a grant from the Community Foundation. We now have a remodeled, functional administrative, resource and community space.



The Community Foundation grant has also allowed us to rebuild our crushed granite pathways, replace the gutters on all the buildings and expand our rainwater harvesting system with the addition of a 20,000-gallon collection tank. We will, when it rains, have the capacity to store 32,000 gallons of water. I'm thinking a move to full rainwater use may be feasible in the near future.

Again, transitioning from one state to another.



Riverside Nature Center while directly affected by the flood remained dedicated to our mission, advancing the stewardship of our natural environment. We, in collaboration with area partner organizations, hosted landowner workshops and provided riparian recovery resources and assistance.

Activities & Programs 2025	2025
Adult	284
Family	23
Youth	72
<b>Total Number of Activities</b>	<b>379</b>
<b>Visitor &amp; Attendee Total</b>	<b>8,538 3,221 youth</b>



Don't get the wrong impression, the first 6 months of 2025 was full of activity and mission strong programs too.

2025 saw the inauguration of a new youth program, Riverside Rangers. This is a monthly opportunity for 9-12-year-old to explore their surroundings as jr. naturalist. The Sprouts PreK reading program is in its 6<sup>th</sup> year and remains a very popular activity for homeschoolers and young families. This past year was also the relaunch of the gleaner's group, renamed the Wildflower Bunch. This is a weekly program where attendees learn how to identify and propagate native wildflowers. Speaking of wildflower seeds, RNC partnered with the Kerrville Native Plant Society and developed a public seed library. Folks can "check out" seeds in exchange for future seeds from those plants.



Membership = 210  
Partners in Nature

- The Community Foundation of the Texas Hill Country
- Crenwelge Motors
- Peterson Health
- Kerrville Convention and Visitors Bureau

Active Volunteers = 79

- Providing 3,377.50 hours of service



Talk about partner organizations, the Texas Master naturalist class of 2025 took the cactus garden on as a class project. They cleaned our several years of “volunteer” growth (the plant kind, not the people kind) and brought back the original intention of the garden, that is to showcase the cacti and succulents. Again, (let’s say it together...) transition.

Change can be hard, it can hurt, it can disrupt but change can also be good. As we move through this period of change or transition we must look for the silver linings and I think here at RNC we have done just that. So please as you look around our community, do not despair. Remember, we are in a period of transition.



The end result just might be as lovely as a newly emerging butterfly.

Thank you for your attention. At this time, I would usually turn it over to our Treasurer, Jeff Gelsone. Unfortunately, he is not able to join us this evening, so you I will present our financial standing

## Financial Report January – December 2025

	2025	2024	Net Change
Operating Revenue			
Programs	17,899	14,023	3,876
Plant Sales & Festivals	22,875	24,297	(1,422)
Rentals	3,743	4,677	(934)
Membership Dues	26,625	20,340	6,285
Partnerships	500	2,000	(1,500)
Grants	29,235	9,772	19,463
Undesignated Donations	651,900	119,893	532,007
Designated Donations	4,125	65,342	(61,217)
Gift Shop (net)	6,225	7,955	(1,730)
Fundraisers	5,091	8,778	(3,687)
Other Income	427	291	136
Total Revenue	768,645	277,368	491,277

			Net
	2025	2024	Change
Operating Expenses			
Programs	2,762	16,216	(13,454)
Plant Sales & Festivals	16,115	18,243	(2,128)
Fundraising	342	1,868	(1,526)
Utilities	8,198	7,760	438
Maintenance & Supplies	13,010	11,353	1,657
Contract & Professional Fees	15,900	15,936	(36)
Personnel	147,476	138,921	8,555
All Other Operating Expenses	183,704	39,113	144,591
Total Operating Expenses	387,507	249,410	138,097
Net Operating Income (loss)	381,138	27,958	353,180

### Investment & Capital Expenditures

	2025	2024	Net Change
Investment Net Income (loss)	142,230	25,479	-
Grants/Project Expenditures	1,175,468	-	1,175,468
Capital Project Expenditures	-	-	-
Total Investment & Capital Expenses	1,317,698	25,479	1,292,219
Total Net Income	1,698,836	53,437	1,645,399

## 2026 Outlook



Bryan Brown addresses the membership and adjourns the meeting.

